

INNOVA-PRO

BICYCLE TIRE



2022

ABOUT INNOVA

Innova Rubber Co., Ltd. was founded in 1995, headquarters in Changhua, Taiwan; factories at Taiwan and China, mainly producing bicycle tires; wheelchair tires; baby stroller tires and all kinds of leisure race tires such as ATV tires; golf cart tires; motocross tires and others.

The company aims to focus on the creation of innovation, the pursuit of quality and customer satisfaction.

Innova has an excellent R&D team and strong production bases in Taiwan and China. Our factories are all awarded ISO -9001 certification to ensure the production of the best tires/tubes and to deliver the best quality to the final consumers for the trust of customers.

Innova, pursuit of innovation is a never-ending effort, has developed a number of global patents including the new patterns, new tire structures, as well as new products.

We believe our constantly improvement in product quality and customer service will eventually make Innova become a household name synonymous with quality and value.



INDEX

INNOVA-PRO

QUICK FINDER

CATEGORY	TIRE	PAGE	CATEGORY	TIRE	PAGE
ROAD/TLR	DASH	P06	CITY/TREKKING ⚡	DELTA FORCE	P36
ROAD/TLR	SEASONS	P07	CITY/TREKKING ⚡	CROSS FIT	P37
ROAD/TLR	CAT ONE	P08	CITY/TREKKING	ATRIA	P38
ZOOM TECH	CASTOR	P10	CITY/TREKKING ⚡	WANDERLUST	P39
ZOOM TECH	FACEMILE	P10	FAT/PLUS	PODIUM	P43
ROAD	NUNKI	P11	FAT/PLUS	TRANSFORMERS	P44
ROAD	HADAR	P12	FAT/PLUS	TRANSFORMERS II	P45
ROAD	SMOOTHIE	P13	FAT/PLUS	GNEISS	P46
ROAD	DIAMOND ACE	P13	FAT/PLUS	SKARN	P47
ROAD	CLIPPER	P14	FAT/PLUS	GOSSAN	P48
MTB/E-BIKE ⚡ <i>NEW!</i>	LOAM WIZARD	P17	SNOW	WIN RIDER	P49
MTB/E-BIKE ⚡ <i>NEW!</i>	JAVELIN	P18	SNOW	WIN RIDER II	P49
MTB/ULTRA LIGHT	CHERT & JAGUAR LITE	P19	SNOW	ICE TRACKER	P49
MTB/ULTRA LIGHT	X BOBCAT	P20	SNOW	ICE TRACKER II	P49
MTB	X BOBCAT	P21	SNOW	DH MONSTER	P49
MTB	X MUSTANG	P22	BMX	THE BIG SLICK	P51
MTB/E-BIKE ⚡	PODIUM	P23	BMX	WHIPLASH	P51
MTB	BUTTE	P24	BMX	TAILWHIP	P51
MTB	TRANSFORMERS	P25	BMX	MIMOSA	P51
MTB	TRANSFORMERS II	P26	BMX	J-BOX	P51
DH	SCHIST	P27	ITT	SCHIST	P54
GRAVEL/E-BIKE ⚡ <i>NEW!</i>	EL CAMINO II	P29	ITT	TRANSFORMERS	P54
GRAVEL	STAMPEDE	P30	ITT	X MUSTANG	P55
GRAVEL	EL CAMINO	P31	ITT	HADAR	P56
CITY/TREKKING ⚡ <i>NEW!</i>	OUTPOST	P33	ITT	STAYING POWER	P56
CITY/TREKKING ⚡ <i>NEW!</i>	MAKARORA	P34	ACCESSORIES	TIRE PACKAGE / ULITE TUBE	P57
CITY/TREKKING ⚡	FLINT	P35			

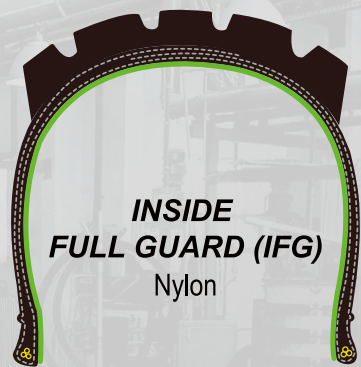
ANTI PUNCTURE

Innova protection system for puncture & cut proof



SIDE GUARD

Nylon



INSIDE FULL GUARD (IFG)

Nylon



OUTSIDE FULL GUARD (OFG)

Nylon



CAP GUARD

Nylon



KEVLAR BELT

Kevlar



SPORT GUARD

3.5mm Rubber

CLASS

TLR TUBELESS READY

TUBELESS READY tires can be used as regular tire with tube inside but also can be used as tubeless tire by adding sealant inside. Tubeless ready has similar function as UST tire but owns double functions of excellent puncture resistance and lightweight for superior rolling as well as handling performance. Adding sealant is necessary.

TEAM

TEAM is the most high end tires that Innova pro produces for competition. The feature of Team is designed by using 120 tpi casing with foldable Kevlar bead for most light weight and special tread compound gives highest performance tires.

RACE

RACE tires is these excellent tire that Innova pro design for Race and final training for competition. By using 60 tpi casing with foldable Kevlar bead, this class owns the features of light weight and powerful performance.

STANDARD

STANDARD tires is most economic tire with the rigid bead and 60tpi casing. It shows very even distribution of stress after inflation and gives pretty good uniformity as well as good tire life.



SNAKE BITE

The function of Anti Snake Bite is designed by adding strongest fillers in the bead area to prevent the snake bite. The weight is added but perfectly suitable for those Down Hill tires requesting to free from snake bite.

CASING & BEAD



Nylon 66 fabric with 60 threads per inch (tpi) which is designed for the RACE and TRAINING version.



Nylon 66 fabric with 120 threads per inch (tpi) which is designed for the TEAM version.



Nylon 66 fabric with 180 threads per inch (tpi) which is designed for the TEAM version.



FOLDING BEAD

Innova uses DuPont™ Kevlar® yarn as the material of bead grommet. This high quality material provides the most light weight foldable tire for team and race class.

ROAD series

TLR
TUBELESS READY

Zoom  Tech

TEAM

RACE

TLR TUBELESS READY

Tires can be used as regular tire with tube inside but also can be used as tubeless tire by adding sealant inside. Tubeless ready has similar function as UST tire but owns double functions of excellent puncture resistance and lighter weight for superior rolling as well as handling performance. Adding sealant is necessary.



ROAD

TLR
TUBELESS READY

DASH IB-3015N

Class	Size	Etrto	Casing	Weight	Psi	Bar	Bead	Part No.
TLR+RACE	700x30C	30-622	60TPI	324	70-90	4.8-6.3	FOLDING	DA7003001

ROAD

TLR
TUBELESS READY



SEASONS

IA-2323N

Class	Size	Etrto	Casing	Weight	Psi	Bar	Bead	Part No.
TLR 120	700x25C	25-622	120TPI	225	85-110	5.9-7.0	FOLDING	SE7002501

ROAD

TLR
TUBELESS READY



CAT ONE

IB-2006N

Class	Size	Etrto	Casing	Weight	Psi	Bar	Bead	Part No.
TLR 120	700x23C	23-622	120TPI	218	85-110	6.0-7.7	FOLDING	CO7002301
TLR 120	700x25C	25-622	120TPI	240	85-110	6.0-7.7	FOLDING	CO7002501

Zoom Tech

- Z:** Zero degree nylon' belt is added under the tread to provide a super low rolling resistance.
- O:** Open tire profile to provide extremely high ride comfort.
- O:** Overlap dual new compounds to obtain best performances of grip and life.
- M:** Mono-chafer: new chafer material helps to have the best adhesion and anti-leaking

DEVELOPED FOR HIGH PRESSURE ROAD TIRES

Low Rolling Resistance / Light Weight / Supple Riding / Faster Acceleration

Grip	★★★★★
Rolling Resistance	★★★★★
Acceleration	★★★★☆
Comfort	★★★★★
Cornering	★★★★★

- Super high quality tire that developed by the technology of "ZOOM" intending to compete with Tubular tire in competition.
- Made of 120Tpi casing with those following sizes of 23C/25C/27C.
- The air pressure can go up to 145 Psi.



CASTOR

FACEMILE

ROAD



IA-2321

IA-2322

Zoom Tech

Size	Etrto	Casing	Weight	Psi	Bar	Bead	CASTOR No.	FACEMILE No.
700x23C	23-622	120TPI	215	100-145	6.8-10.0	FOLDING	CA7002301	FA7002301
700x25C	25-622	120TPI	225	100-135	6.8-9.3	FOLDING	CA7002501	FA7002501
700x27C	27-622	120TPI	250	80-115	5.5-8.0	FOLDING	CA7002701	FA7002701

NUNKI

700
20C700
23C700
25C

TEAM

RACE

IA-2318

Class	Size	Etrto	Casing	Weight	Psi	Bar	Bead	Part No.
TEAM	700x20C	20-622	120TPI	165	100-130	7.0-9.0	FOLDING	NU7002001
TEAM	700x23C	23-622	120TPI	190	100-130	7.0-9.0	FOLDING	NU7002301
TEAM	700x25C	25-622	120TPI	200	86-110	6.0-7.0	FOLDING	NU7002501
RACE	700x25C	25-622	60TPI	220	86-110	6.0-7.0	FOLDING	NU7002502

★ color stripe for option- white/gray/red/yellow

HADAR

700
23C700
25C700
28C

TEAM

RACE

IA-2319

Class	Size	Etrto	Casing	Weight	Psi	Bar	Bead	Part No.
TEAM	700x23C	23-622	120TPI	190	100-130	7.0-9.0	FOLDING	HA7002301
TEAM	700x25C	25-622	120TPI	215	86-110	6.0-7.0	FOLDING	HA7002501
RACE	700x25C	25-622	60TPI	230	86-110	6.0-7.0	FOLDING	HA7002502
RACE	700x28C	28-622	60TPI	260	60-100	4.2-6.8	FOLDING	HA7002801

★ color stripe for option- white/gray/red/yellow



SMOOTHIE

DIAMOND ACE



700
23C

RACE

STANDARD

IA-2308

IA-2309

Class	Size	Etrto	Casing	Weight	Psi	Bar	Bead	SMOOTHIE No.	DIAMOND ACE No.
RACE	700x23C	23-622	60TPI	225	100-120	6.8-8.3	FOLDING	SM7002301	DA7002301
STANDARD	700x23C	23-622	60TPI	295	100-120	6.8-8.3	RIGID	SM7002302	DA7002302

★ color stripe for option- white/gray/red/yellow

CLIPPER



700
28C

RACE

IB-3006

Class	Size	Etrto	Casing	Weight	Psi	Bar	Bead	Part No.
RACE	700x28C	28-622	60TPI	290	60-100	4.2-6.8	FOLDING	CL7002801

STANDARD

TEAM

TUBELESS
READY

E-25/50

RACE

Ultra
light



E-BIKE

MTB

NEW

MTB / E-BIKE / GRAVEL / CITY / TREKKING





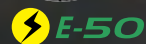
LOAM WIZARD NEW

Designed for All Mountain and Enduro riding. On the uphill, the large center block provides improved climbing traction, and quick acceleration. The links between the center block makes the pattern block more stable under load and reduce squirming. The directional design on the tread allows for significant reductions in tire rolling resistance. The combination of aggressive arrangement of the blocks, open design and a simple V-slot located in the center and side blocks translate to direct and precise steering. It allow for a high efficient transfer of power to the ground while maintaining extreme durability.



IB-3021N

TLR 60
TUBELESS READY



Class	Size	Etrto	Casing	Weight	Psi	Bar	Bead	Part No.	Tan Part No.
RACE+TLR	29x2.35	60-622	60TPI	860	35-65	2.4-4.5	FOLDING	LW2923501	LW2923501T
E BIKE-50+TLR	29x2.35	60-622	60TPI	1300	35-65	2.4-4.5	FOLDING	E50L29235	E50L29235T

E-50 With Reflective Stripe / Sport Guard-3.5mm+ Side Guard



JAVELIN NEW

Designed as a leading off-road road conditions and ultra-endurance tires. The unwavering traction of the shoulder knobs, and the super handling when going downhill. This is the preferred tyre for our entire endurance team of endurance racers due to its unmatched traction on off-camber trails.

The interspersed central pattern blocks can bite into the dirt in any wet or dry terrain while providing stability at any speed. The block are arranged in a way to ensure effective mud clearance. It can also be used as a rear tire on loose, steep terrain for its strong braking traction. It can also be used as a front tire for its cornering capability.

TLR 60
TUBELESS READY



IB-3022N

Class	Size	Etrto	Casing	Weight	Psi	Bar	Bead	Part No.	Tan Part No.
RACE+TLR	29x2.35	60-622	60TPI	860	35-65	2.4-4.5	FOLDING	JA2923501	JA2923501T
E BIKE-50+TLR	29x2.35	60-622	60TPI	1300	35-65	2.4-4.5	FOLDING	E50J29235	E50J29235T

E-50 With Reflective Stripe / Sport Guard-3.5mm+ Side Guard



MTB ULTRA LIGHT

CHERT

The tread pattern is designed for both road and hard terrain, Low tread profile and high TPI casing give fast rolling and efficient.



LV-1004

Class	Size	Etrto	Casing	Weight	Psi	Bar	Bead	Part No.
TEAM+ULTRA LIGHT	26x1.95	44-559	120TPI	295	30-60	2.1-4.2	FOLDING	CHL261951

MTB ULTRA LIGHT

JAGUAR LITE

Light-weight MTB tire with linked tread allows rolling fast and efficient. Well-supported working edge provides the stability for turning.



IA-2576

Class	Size	Etrto	Casing	Weight	Psi	Bar	Bead	Part No.
TEAM+ULTRA LIGHT	27.5x1.95	44-584	120TPI	330	29-65	2.0-4.5	FOLDING	JLL275195

MTB ULTRA LIGHT

X BOBCAT

TEAM
+ULTRA LIGHT



IB-2003L

Class	Size	Etrto	Casing	Weight	Psi	Bar	Bead	Part No.
TEAM+ULTRA LIGHT	26x1.95	44-559	120TPI	315	30-60	2.1-4.2	FOLDING	XBL261951
TEAM+ULTRA LIGHT	27.5x1.95	44-584	120TPI	320	30-60	2.1-4.2	FOLDING	XBL275195
TEAM+ULTRA LIGHT	29x1.95	44-622	120TPI	355	30-60	2.1-4.2	FOLDING	XBL291951
TEAM+ULTRA LIGHT	29x2.10	54-622	120TPI	425	30-60	2.1-4.2	FOLDING	XBL292101

X BOBCAT

RACE

TLR 60
TUBELESS READY



IB-2003

Class	Size	Etrto	Casing	Weight	Psi	Bar	Bead	Part No.
RACE	26x2.10	52-559	60TPI	500	30-60	2.1-4.2	FOLDING	XB2621001
RACE+TLR	27.5x2.10	54-584	60TPI	565	30-60	2.1-4.2	FOLDING	XB2752101
RACE	27.5x2.10	54-584	60TPI	540	30-60	2.1-4.2	FOLDING	XB2752102
RACE+TLR	29x2.10	54-622	60TPI	605	30-60	2.1-4.2	FOLDING	XB2921001

X MUSTANG

RACE



IB-2002

Class	Size	Etrto	Casing	Weight	Psi	Bar	Bead	Part No.
RACE	26x2.0	50-559	60TPI	490	35-70	2.5-5.0	FOLDING	XM2620001
RACE	27.5x2.10	54-584	60TPI	535	35-70	2.5-5.0	FOLDING	XM2752101

PODIUM



IB-3014N

RACE

TLR 60
TUBELESS READY



Class	Size	Etrto	Casing	Weight	Psi	Bar	Bead	Part No.
E BIKE-50+TLR	27.5X2.60	66-584	60TPI	1345	30-60	2.1-4.2	FOLDING	E50P27526
RACE+TLR	27.5X2.60	66-584	60TPI	860	30-65	2.1-4.5	FOLDING	PO2752601
RACE	27.5x2.25	58-584	60TPI	721	30-65	2.1-4.5	FOLDING	PO2752251
RACE	29x2.25	58-622	60TPI	764	30-65	2.1-4.5	FOLDING	PO2922501
RACE	29x2.40	60-622	60TPI	896	30-65	2.1-4.5	FOLDING	PO2924001

BUTTE

Pattern Design with separater knobs is good for mud performance. Suitable for use on road or hard soil territory.

RACE

TLR 60
TUBELESS READY



IB-3011N

Class	Size	Etrto	Casing	Weight	Psi	Bar	Bead	Part No.	Tan Part No.
RACE+TLR	27.5X2.25	58-584	60TPI	610	30-65	2.1-4.5	FOLDING	BU2752251	BU2752251T
RACE+TLR	29X2.25	58-622	60TPI	650	30-65	2.1-4.5	FOLDING	BU2922501	BU2922501T

MTB

TRANSFORMERS



RACE

TEAM

TLR 60
TUBELESS READY



IA-2569

Class	Size	Etrto	Casing	Weight	Psi	Bar	Bead	Part No.	Tan Part No.
TEAM	26x2.10	54-559	120TPI	485	35-65	2.4-4.5	FOLDING	TR2621001	TR2621001T
RACE	26x2.10	54-559	60TPI	500	35-65	2.4-4.5	FOLDING	TR2621001	TR2621001T
RACE+TLR	27.5x2.10	54-584	60TPI	540	35-65	2.4-4.5	FOLDING	TR2752101	TR2752101T
TEAM	27.5x2.10	54-584	120TPI	490	35-65	2.4-4.5	FOLDING	TR2752102	TR2752102T
RACE	27.5x2.10	54-584	60TPI	530	35-65	2.4-4.5	FOLDING	TR2752103	TR2752103T
RACE+TLR	29x2.10	54-622	60TPI	570	35-65	2.4-4.5	FOLDING	TR2921001	TR2921001T
TEAM	29x2.10	54-622	120TPI	520	35-65	2.4-4.5	FOLDING	TR2921002	TR2921002T
RACE	29x2.10	54-622	60TPI	540	35-65	2.4-4.5	FOLDING	TR2921003	TR2921003T

MTB

TRANSFORMERS II



RACE

TLR 60
TUBELESS READY



IB-3003

Class	Size	Etrto	Casing	Weight	Psi	Bar	Bead	Part No.
RACE+TLR	27.5x2.10	54-584	60TPI	590	30-60	2.1-4.2	FOLDING	TRII275211
RACE	27.5x2.10	54-584	60TPI	565	30-60	2.1-4.2	FOLDING	TRII275212



DH

SCHIST



SNAKE BITE



IB-3004

Size	Etrto	Casing	Weight	Psi	Bar	Bead	Part No.
26x2.50	62-559	60TPI	1055	35-65	2.4-4.5	FOLDING	SH2625001
27.5x2.50	62-584	60TPI	1105	35-65	2.4-4.5	FOLDING	SH2752501

★ With Snake Bite & Side Guard




GRAVEL

NEW


EL CAMINO II IB-3018

The smooth tread center can roll very quickly on paved road. The diamond-shaped intermediate transition tread make sure this tire won't be stopped by any rough roads and long detours.

It allow for strong confidence in any road condition, providing a smooth riding experience, and maintaining good handling on unpredictable terrain with the square pattern of the tread shoulder. Suitable for riders who want to relax themselves without a destination, just for the pleasure of riding.

 **E-25**

With Reflective Stripe / Sport Guard-3.5mm

 **E-50**

With Reflective Stripe / Sport Guard-3.5mm+ Side Guard

Class	Size	Etrto	Casing	Weight	Psi	Bar	Bead	Part No.	Tan Part No.
RACE	700x38C	38-622	60TPI	450	50-75	3.5-5.0	FOLDING	EC7003801	EC7003801T
E BIKE-50	700x38C	38-622	60TPI	730	50-75	3.5-5.0	FOLDING	E50E70038	E50E70038T
E BIKE-25	700x38C	38-622	33TPI	780	50-75	3.5-5.0	RIGID	E25E70038	E25E70038T

GRAVEL

STAMPEDE

RACE



IB-3010

Class	Size	Etrto	Casing	Weight	Psi	Bar	Bead	Part No.
RACE	700x40C	40-622	60TPI	445	50-75	3.5-5.0	FOLDING	ST7004001

GRAVEL

EL CAMINO

TLR 60
TUBELESS READY

RACE



Class	Size	Etrto	Casing	Weight	Psi	Bar	Bead	Part No.	Tan Part No.
TLR 60	650Bx47C	47-584	60TPI	530	30-60	2.0-4.1	FOLDING	EC6504701	EC6504701T
RACE	700x45C(29x1.75)	45-622	60TPI	—	30-60	2.0-4.1	FOLDING	EC7004501	EC7004501T
RACE	26x1.75	47-559	60TPI	—	30-60	2.0-4.1	FOLDING	EC2617501	EC2617501T

CITY / TREKKING / TOURING



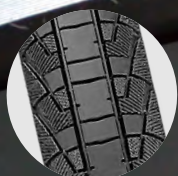
CITY / TREKKING
/ TOURING



OUTPOST

NEW

The continuous straight tread pattern in the center allows for a lower rolling resistance for charging down the straights, while a bi-textured surface designs on the sides treads are used to improve the handling in cornering. Built for the mixed pavement and light gravel.



IB-3019

RACE



With Reflective Stripe / Sport Guard-3.5mm



With Reflective Stripe / Sport Guard-3.5mm+ Side Guard

Class	Size	Etrto	Casing	Weight	Psi	Bar	Bead	Part No.	Tan Part No.
RACE	700x38C	38-622	60TPI	430	50-75	3.5-5.0	FOLDING	OU7003801	OU7003801T
E BIKE-50	700x38C	38-622	60TPI	800	50-75	3.5-5.0	FOLDING	E50O70038	E50O70038T
E BIKE-25	700x38C	38-622	33TPI	860	50-75	3.5-5.0	RIGID	E25O70038	E25O70038T

CITY / TREKKING
/ TOURING



MAKARORA IB-3020

Featuring an ultra-dynamic large bevel profile with a smooth center section and a sturdy diamond side tread. Even on unpaved gravel road, it can roll easily on the road and have maintain strong grip. The specially optimized design provides maximum durability, low rolling resistance and excellent grip even at high speeds.

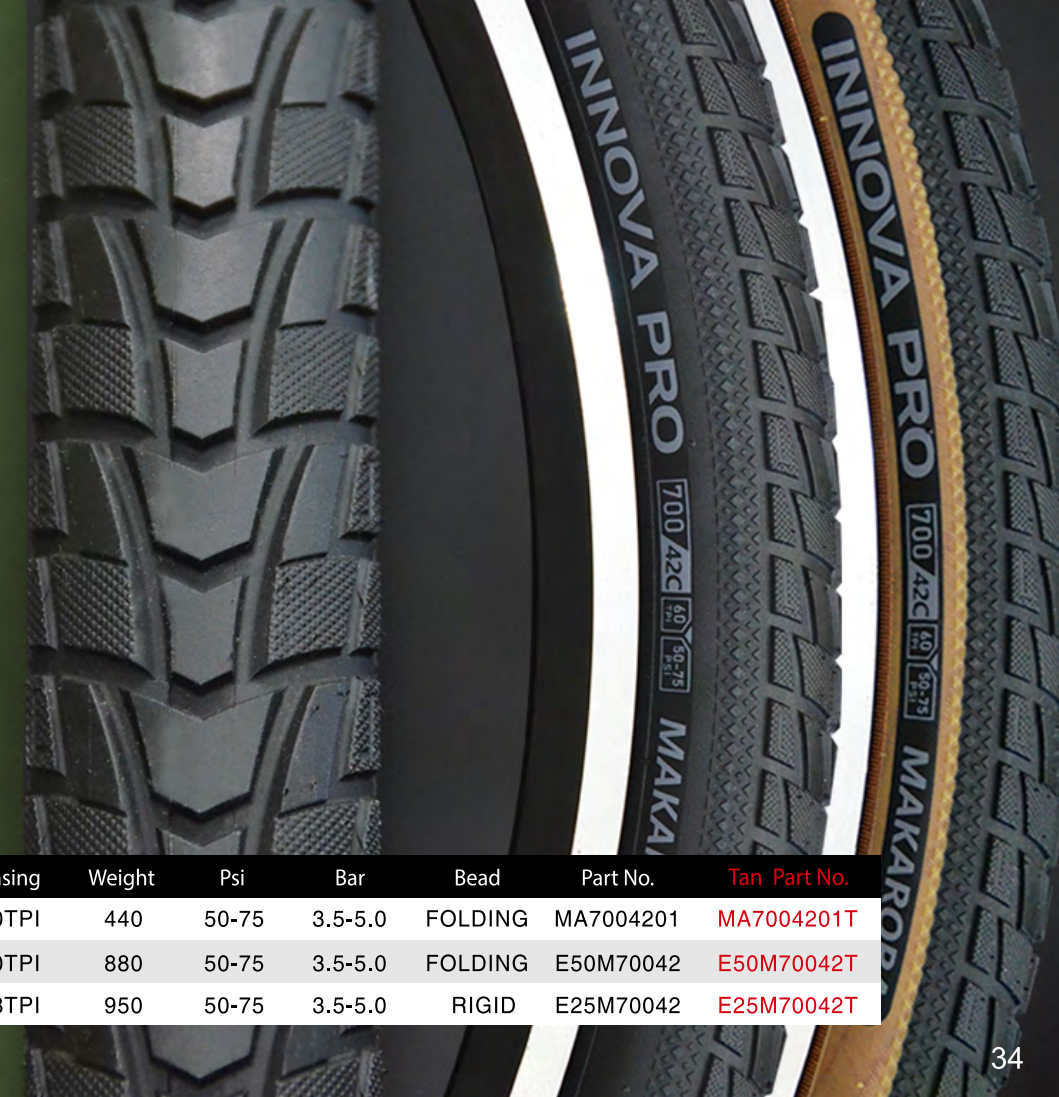
RACE



With Reflective Stripe / Sport Guard-3.5mm



With Reflective Stripe / Sport Guard-3.5mm+ Side Guard



Class	Size	Etrto	Casing	Weight	Psi	Bar	Bead	Part No.	Tan Part No.
RACE	700x42C	42-622	60TPI	440	50-75	3.5-5.0	FOLDING	MA7004201	MA7004201T
E BIKE-50	700x42C	42-622	60TPI	880	50-75	3.5-5.0	FOLDING	E50M70042	E50M70042T
E BIKE-25	700x42C	42-622	33TPI	950	50-75	3.5-5.0	RIGID	E25M70042	E25M70042T

FLINT

 E-25



IB-3002

Class	Size	Etrto	Casing	Weight	Psi	Bar	Bead	Part No.
E BIKE-25	700x38C	38-622	33TPI	950	50-75	3.5-5.0	RIGID	E25F70038

 E-25 With Reflective Stripe / Sport Guard-3.5mm

DELTA FORCE


RACE

 E-25



IA-2084

Class	Size	Etrto	Casing	Weight	Psi	Bar	Bead	Part No.
E BIKE-25	700x38C	40-622	33TPI	895	50-75	3.5-5.0	RIGID	E25D70038
RACE	26x1.50	40-559	60TPI	425	40-65	2.75-4.5	FOLDING	DF2615001
RACE	26x1.75	47-559	60TPI	495	40-65	2.75-4.5	FOLDING	DF2617501
RACE	27.5x1.50	40-584	60TPI	430	40-65	2.75-4.5	FOLDING	DF2751501
RACE	27.5x1.75	47-584	60TPI	505	40-65	2.75-4.5	FOLDING	DF2751751
RACE	29x1.75	47-622	60TPI	525	40-65	2.75-4.5	FOLDING	DF2917501

 E-25 With Reflective Stripe / Sport Guard-3.5mm



CROSS FIT



IA-2549



RACE

TEAM

STANDARD

Class	Size	Etrto	Casing	Weight	Psi	Bar	Bead	Part No.
E BIKE-25	700x40C	42-622	33TPI	1094	50-75	3.5-5.0	RIGID	E25C70040
TEAM	26x2.0	50-559	120TPI	425	35-65	2.4-4.5	FOLDING	CF2620001
RACE	26x2.0	50-559	60TPI	455	35-65	2.4-4.5	FOLDING	CF2620002
STANDARD	26x2.0	50-559	60TPI	515	35-65	2.4-4.5	RIGID	CF2620003
RACE	27.5x2.10	54-584	60TPI	545	35-65	2.4-4.5	FOLDING	CF2752101
STANDARD	27.5x2.10	54-584	60TPI	605	35-65	2.4-4.5	RIGID	CF2752102
TEAM	29x2.10	54-622	120TPI	555	35-65	2.4-4.5	FOLDING	CF2921001
RACE	29x2.10	54-622	60TPI	580	35-65	2.4-4.5	FOLDING	CF2921002
STANDARD	29x2.10	54-622	60TPI	645	35-65	2.4-4.5	RIGID	CF2921003
TEAM	29x2.25	58-622	120TPI	535	35-65	2.4-4.5	FOLDING	CF2922501
RACE	29x2.25	58-622	60TPI	580	35-65	2.4-4.5	FOLDING	CF2922502

 With Reflective Stripe / Sport Guard-3.5mm

ATRIA



IA-2562



RACE

TEAM

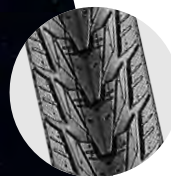
Class	Size	Etrto	Casing	Weight	Psi	Bar	Bead	Part No.
TEAM	26x2.0	50-559	120TPI	405	35-65	2.4-4.5	FOLDING	AT2620001
RACE	26x2.0	50-559	60TPI	435	35-65	2.4-4.5	FOLDING	AT2620002
RACE	27.5x2.0	50-584	60TPI	495	35-65	2.4-4.5	FOLDING	AT2752001
RACE	700x32C	32-622	60TPI	365	50-75	3.4-5.1	FOLDING	AT7003201
RACE	700x35C	37-622	60TPI	390	50-90	3.4-6.2	FOLDING	AT7003501

WANDERLUST



RACE

 E-25



 E-25

With Reflective Stripe / Sport Guard-3.5mm

 E-50

With Reflective Stripe / Sport Guard-3.5mm+ Side Guard

IB-3013

Class	Size	Etrto	Casing	Weight	Psi	Bar	Bead	Part No.
RACE	27.5x1.75	47-584	60TPI	455	40-65	2.75-4.5	FOLDING	WA2751751
RACE	700x38C	38-622	60TPI	495	40-65	2.75-4.5	FOLDING	WA7003801
E BIKE-50	700x38C	38-622	60TPI	800	50-75	3.5-5.0	FOLDING	E50W70038
E BIKE-25	700x38C	38-622	33TPI	860	50-75	3.5-5.0	RIGID	E25W70038

CITY / TREKKING / TOURING



E-BIKE

FAT Tire

FAT Bike 4.0/4.8

&

Plus 2.8/3.0



PODIUM



PLUS 2.8



IB-3014

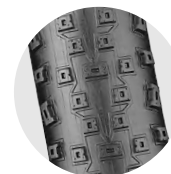
Class	Size	Etrto	Casing	Weight	Psi	Bar	Bead	Part No.
RACE	20x2.8	70-406	60TPI	683	15-30	1.1-2.1	FOLDING	PO2028001
RACE	24x2.8	70-507	60TPI	785	15-30	1.1-2.1	FOLDING	PO2428001
RACE	26x2.8	70-559	60TPI	850	15-30	1.1-2.1	FOLDING	PO2628001
RACE	27.5x2.8	70-584	60TPI	910	15-30	1.1-2.1	FOLDING	PO2752801

TRANSFORMERS

An all terrain design by using many small knobs obtains the comfortable ride and smooth handle control. Also the design of holes in center of each knob is designed give more contact area with road surface to earn the best traction.

PLUS 2.8

PLUS 3.0



IA-2569

Class	Size	Casing	Weight	Psi	Bar	Bead	Part No.
RACE	27.5x2.8	60TPI	780	35	2.4	FOLDING	TR2752801
RACE	29x3.0	60TPI	905	15-30	1.1-2.1	FOLDING	TR2930001

TRANSFORMERS II

Aggressive outlook plus the design of small lines insert into each knob give the tire powerful performances in riding. No tube TRANSFORMERS II can always let you enjoy such a delightful riding experience.



IB-3003N

Class	Size	Casing	Weight	Psi	Bar	Bead	Part No.
TLR 60	27.5x3.0	60TPI	850	35	2.4	FOLDING	TR2753001

GNEISS

Dense central knobs to get an excellent performance of easy rolling and comfort ride ; the tread shoulder area is designed with loose knobs to earn great traction in cornering as well as steady handling.



LV-1003

Class	Size	Casing	Weight	Psi	Bar	Bead	Part No.
TEAM	27.5x3.0	120TPI	860	35	2.4	FOLDING	GN2753001
RACE	26x4.0	60TPI	1255	5-15	0.4-1.1	FOLDING	GN2640001

GOSSAN

The new particle pattern design is with great center pieces and low knobbles. It is good for both on road and off road condition. Very good grip for off road and very stable for turning.

FAT 4.0

FAT 4.8



LV-1008

Class	Size	Casing	Weight	Psi	Bar	Bead	Part No.
RACE	26x4.0	60TPI	1065	5-15	0.4-1.1	FOLDING	GO2640001
RACE	26x4.8	60TPI	1305	30	2.1	FOLDING	GO2648001

SNOW TIRES



DH MOSTER

WIN-RIDER

ICE TRACKER

WIN-RIDER II

ICE TRACKER II



Aluminum studs with tungsten carbide pins



Aluminum studs with tungsten carbide pins

Name	Pattern	Size	Etrto	Casing(Tpi)	Bead	Weight	Psi	Bar	Studes	Part No.
ICE TRACKER	IA-2901	26x2.10	54-559	60TPI	FOLDING	810g	40-65	2.75-4.5	268	IT2621001
WIN RIDER	IA-2902	700x38C	40/44-622	60TPI	FOLDING	600g	50-75	3.4-5.1	110	WR7003801
ICE TRACKER II	IA-2572	29x2.10	54-622	60TPI	FOLDING	815g	35-65	2.4-4.5	184	ITII292101
ICE TRACKER II	IA-2572	27.5x2.10	54-584	60TPI	FOLDING	765g	35-65	2.4-4.5	184	ITII275211
WIN-RIDER II	IA-2573	29x2.10	54-622	60TPI	FOLDING	815g	35-65	2.4-4.5	300	WRII292101
DH MONSTER	IA-2570	26x2.35	58-559	60TPI	FOLDING	820g	35-65	2.4-4.5	312	DH2623501
DH MONSTER	IA-2570	27.5x2.35	58-584	60TPI	FOLDING	870g	35-65	2.4-4.5	324	DH2752351



Steel studs with tungsten carbide pins



Steel studs with tungsten carbide pins

Name	Pattern	Size	Etrto	Casing(Tpi)	Bead	Weight	Psi	Bar	Studes	Part No.
ICE TRACKER	IA-2901	26x2.10	54-559	33TPI	RIGID	870g	40-65	2.75-4.5	268	ITS262101
WIN RIDER	IA-2902	700x38C	40/44-622	33TPI	RIGID	645g	50-75	3.4-5.1	110	WRS700381
ICE TRACKER II	IA-2572	29x2.10	54-622	33TPI	RIGID	885g	35-65	2.4-4.5	184	ITII29211
ICE TRACKER II	IA-2572	27.5x2.10	54-584	33TPI	RIGID	820g	35-65	2.4-4.5	184	ITII27521
WIN-RIDER II	IA-2573	29x2.10	54-622	33TPI	RIGID	885g	35-65	2.4-4.5	300	WRIIS29211
DH MONSTER	IA-2570	26x2.35	58-559	33TPI	RIGID	880g	35-65	2.4-4.5	312	DHS262351
DH MONSTER	IA-2570	27.5x2.35	58-584	33TPI	RIGID	930g	35-65	2.4-4.5	324	DHS275235

BMX



THE BIG SLICK (TBS)

J-BOX

WHIPLASH

TAILWHIP

MIMOSA



J-BOX IB-2005

Size	Etrto	Casing	Bead	Weight	Psi	Bar	Part No.
20x2.2	56-406	60TPI	FOLDING	425	60-110	4.2-7.8	JB2022001

THE BIG SLICK (TBS) IB-3009

Size	Etrto	Casing	Bead	Weight	Psi	Bar	Part No.
20x2.3	58-406	60TPI	FOLDING	595	110	7.6	TBS202301
20x2.3	58-406	60TPI	RIGID	645	110	7.6	TBS202302
20x2.4	60-406	60TPI	FOLDING	710	110	7.6	TBS202401
20x2.4	60-406	60TPI	RIGID	770	110	7.6	TBS202402

WHIPLASH IA-2248

Size	Etrto	Casing	Bead	Weight	Psi	Bar	Part No.
20x2.0	50-406	60TPI	FOLDING	500	110	7.6	WH2020001
20x2.0	50-406	60TPI	RIGID	550	110	7.6	WH2020002
20x2.25	58-406	60TPI	FOLDING	595	110	7.6	WH2022501
20x2.25	58-406	60TPI	RIGID	645	110	7.6	WH2022502

TAILWHIP IA-2249

Size	Etrto	Casing	Bead	Weight	Psi	Bar	Part No.
20x2.125	54-406	60TPI	FOLDING	520	110	7.6	TA2021251
20x2.125	54-406	60TPI	RIGID	575	110	7.6	TA2021252

MIMOSA IA-2128

Size	Etrto	Casing	Bead	Weight	Psi	Bar	Part No.
20x2.0	50-406	60TPI	FOLDING	455	110	7.6	MI2020001
20x2.0	50-406	60TPI	RIGID	505	110	7.6	MI2020002
20x2.20	56-406	60TPI	FOLDING	485	110	7.6	MI2022001
20x2.20	56-406	60TPI	RIGID	535	110	7.6	MI2022002
20x2.30	58-406	60TPI	FOLDING	540	110	7.6	MI2023001
20x2.30	58-406	60TPI	RIGID	600	110	7.6	MI2023002
20x2.40	60-406	60TPI	RIGID	650	110	7.6	MI2024001



Feature:

- The upper side acts like tubeless
- Liner in the bottom works as tube
- Adding sealant is necessary

★ *The best choice for tubeless construction!!*

- New tubeless system
- Fit all kind of rims
- Easy fitting and inflation
- Sealant must be added
- With anti-puncture function
- Tire is foldable and easy to carry



Why is ITT tire?

Safety

- Liner hold tire and rim together
- No pinch flat
- No run out of rim

Friendly & Economic

- Regular Rim
- Easy Fitting
- Easy Pumping
- No Contamination

INTEGRATED TUBELESS TIRE TECH

ITT

SCHIST



IB-3004

Class	Etrto	Casing	Weight	Psi	Bar	Bead	Part No.
26x2.5	62-559	60TPI	1100	20-65	1.4-4.5	FOLDING	ISC260251
27.5x2.5	62-584	60TPI	1170	20-65	1.4-4.5	FOLDING	ISC275251
29x2.4	60-622	60TPI	1240	20-65	1.4-4.5	FOLDING	ISC290241

TRANSFORMERS



IA-2569

Class	Etrto	Casing	Weight	Psi	Bar	Bead	Part No.
26x2.25	58-559	60TPI	1090	35-70	2.1-4.5	FOLDING	ITR260225
26x2.4	60-559	60TPI	1255	35-70	2.1-4.5	FOLDING	ITR260241
27.5x2.25	58-584	60TPI	1140	35-70	2.1-4.5	FOLDING	ITR275225
27.5x2.4	60-584	60TPI	1320	35-70	2.1-4.5	FOLDING	ITR275241
29x2.1	54-622	60TPI	880	35-70	2.1-4.5	FOLDING	ITR290211

ITT



Feature:

- The upper side acts like tubeless
- Liner in the bottom works as tube
- Adding sealant is necessary

New tubeless system

- Fit all kind of rims
- Easy fitting and inflation
- Sealant must be added
- With anti-puncture function
- Tire is foldable and easy to carry

X MUSTANG



IB-2002

Class	Etrto	Casing	Weight	Psi	Bar	Bead	Part No.
26x2.0	50-559	60TPI	900	35-70	2.4-5.0	FOLDING	IXM260201
27.5x2.1	54-584	60TPI	955	35-70	2.4-5.0	FOLDING	IXM275211

ITT

- **New tubeless system**
- Fit all kind of rims
- Easy fitting and inflation
- Sealant must be added
- With anti-puncture function
- Tire is foldable and easy to carry

★ *The best choice for tubeless construction!!*

HADAR



IA-2319

Class	Etrto	Casing	Weight	Psi	Bar	Bead	Part No.
700x25C	25-622	60TPI	475	86-110	6.0-7.6	FOLDING	IHA700251
700x25C	25-622	120TPI	450	86-110	6.0-7.6	FOLDING	IHA700252

ITT

STAYING POWER



IA-2406

Class	Etrto	Casing	Weight	Psi	Bar	Bead	Part No.
700x32C	32-622	60TPI	575	50-90	3.4-6.2	FOLDING	ISP700321

PRO Tires Package



0.8mm Ulite Tubes

- ▶ 700C Tubes
- ▶ 26" Tubes
- ▶ 27.5" Tubes
- ▶ 29" Tubes



FIXED GEAR

SMOOTHIE

- ▶ 700X23C
- ▶ 700X25C

STAYING POWER

- ▶ 700X28C
- ▶ 700X32C
- ▶ 700X35C



